


Technical information.....	128-129
Compact hogger.....	130-131
Segment Hogger.....	132-135
Vario hogger.....	136-137
Saw blade segment hogger.....	138-139
Spare saw blade.....	140
Scoring saw blade.....	141-143




Technical information

Hogger

	PLT - compact Hogger 2600	
		
<b>Application</b>	For sizing coated or uncoated panel material for furniture	
<b>Machine</b>	Double end profiler with standard shaft or hydro shaft	
<b>Material</b>		
OSB, chip board, MDF warm	-	
OSB boards	+++	
Chip board with loose central layer	+++	
Chip board, Melamine coated	+++	
Chip board, HPL coated	++	
Chip board, paper or foil coated	+++	
Chipboard with projecting veneer, longitudinal	+++ with chipper knives	
Chip board with projecting veneer, cross	++	
Chip board with loose projection	-	
MDF coated and uncoated	++ without hydro +++ with hydro on hydro shaft	
Solid wood, longitudinal	+	
Solid wood, cross	+	

Technical information

Hogger

	Segment-Hogger 0033	Vario-Hogger 0033	Saw blade Segment Hogger 0033
			
	For sizing uncoated panel material	For sizing and hogging of solid wood	For sizing of coated and uncoated panel material with large hogging width
	Double end profiler	Multi-rip saws Double-end profilers	For sizing of coated and uncoated panel material with large hogging
	++	-	++
	++	+	++
	+	+	+
	+	+	+
	-	-	+
	-	-	-
	-	+	+
	-	+	+
	+	-	++
	+	+	+
	-	++	-
	-	+	++

S  
AWBLADES  
H  
OGGERS  
C  
UTTER WITH BORE  
S  
HANK TYPE CUTTERS  
D  
RILLS  
K  
NIVES  
C  
LAMPING SYSTEM  
DP - TOOLS  
A  
CCESSORIES

# PLT Ultra compact hogger

**NEW**



2600

**APPLICATION:**

Sizing wood-based material. Produces very good edge quality and smooth narrow surface. Preferably applied for furniture elements with thin edge and thick edge.

**MATERIAL:**

Wood-based material, raw and coated. Suitable for chip boards with "loose" central layer and wood-based material with delicate coating (e.g. foil, paper, etc.)

**MACHINE:**

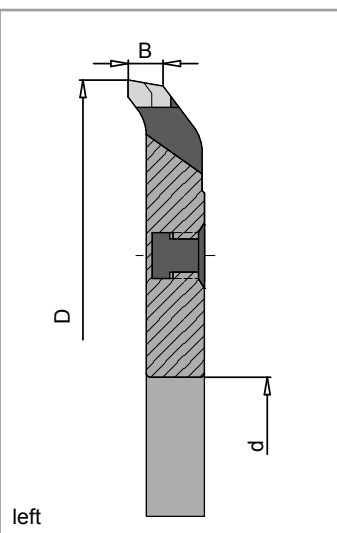
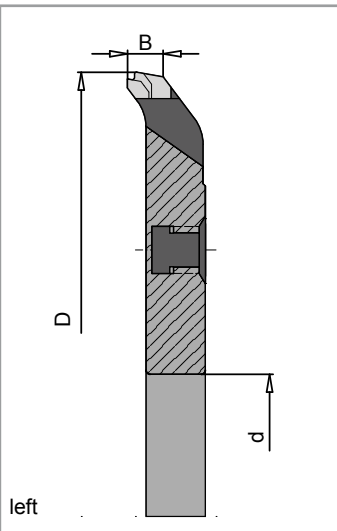
Double-end-tenoner, edge banding machine

**DESIGN:**

Improved chip removal thanks to retarded chip ejection. Particularly suitable for machines with chip optimized extraction hood. Reduced multiple hogging, tool service life up to 25% longer, lower set-up costs. Rotating direction according to DIN-EN 50144  
Ultra: Consistant kerf even after rhs-grinding.

**TOOTH:**

DP



**PLT - ultra-hogger**

D mm	B mm	d mm	Z	R/L	LZ	Hogger bayonet	Hogger with 4 ph	Hogger with sleeve	Hogger with hydro sleeve
						Order No.	Order No.	Order No.	Order No.
For quick clamping system 192									
250	10	80	24	lhs	○	10152793	10157133	10152848	10152855
250	10	80	24	rhs	○	10152792	10157138	10152844	10152857
250	10	80	36	lhs	◆	10152794	10157139	10152852	10152858
250	10	80	36	rhs	◆	10152796	10157140	10152850	10152859
250	10	80	48	lhs	◆	10152797	10157141	10152854	10152860
250	10	80	48	rhs	◆	10152798	10157154	10152853	10152861

For quick clamping system 160

250	10	60	24	lhs.	○	10152799			
250	10	60	24	rhs.	○	10152800			
250	10	60	36	lhs.	○	10152801			
250	10	60	36	rhs.	○	10152802			
250	10	60	48	lhs.	○	10152803			
250	10	60	48	rhs.	○	10152804			

**Compact-ultra-hogger**

D mm	B mm	d mm	Z	R/L	LZ	Hogger bayonet	Hogger with 4 ph	Hogger with sleeve	Hogger with hydro sleeve
						Order No.	Order No.	Order No.	Order No.
For quick clamping system 192									
250	10	80	24	lhs.	○	10152805	10157142	10152862	10152868
250	10	80	24	rhs.	○	10152806	10157143	10152863	10152869
250	10	80	36	lhs.	○	10152807	10157144	10152864	10152870
250	10	80	36	rhs.	○	10152809	10157145	10152865	10152871
250	10	80	48	lhs.	○	10152810	10157146	10152866	10152872
250	10	80	48	rhs.	○	10152811	10157147	10152867	10152873

For quick clamping system 160

250	10	60	24	lhs.	○	10152812			
250	10	60	24	rhs.	○	10152813			
250	10	60	36	lhs.	○	10152814			
250	10	60	36	rhs.	○	10152815			
250	10	60	48	lhs.	○	10152816			
250	10	60	48	rhs.	○	10152817			

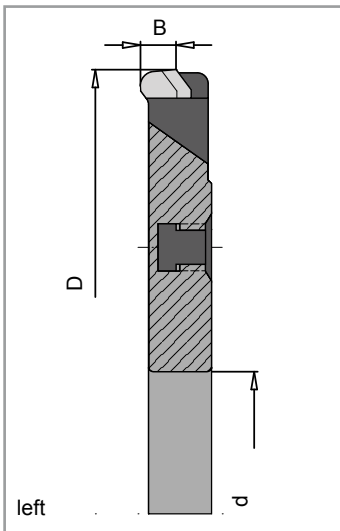
S AWBLADES  
 H HOGGERS  
 C UTTER WITH BORE  
 S HANK TYPE CUTTERS  
 D RILLS  
 K NIVES  
 C LAMPING SYSTEM  
 DP - TOOLS  
 A CCESSORIES

# RLT compact hogger

**NEW**



2600



**APPLICATION:**

Sizing wood-based material with delicate foil or paper coating with compact central layer. Produces an excellent edge quality, but only an average quality on the narrow surface. Preferably applied for furniture elements with thin edge and thick edge. Minimum workpiece thickness 12 mm.

**MATERIAL:**

Wood-based material, raw and coated. Suitable for chip boards with "loose" central layer and wood-based material with delicate coating (e.g. foil, paper, etc.)

**MACHINE:**

Double-end tenoner, edge banding machine

**DESIGN:**

Improved chip removal thanks to retarded chip ejection. Particularly suitable for machines with chip optimized extraction hood. Reduced multiple hogging, tool service life up to 25% longer, lower set-up costs.  
Rotating direction according to DIN-EN 50144  
Ultra: Constant kerf even after rhs-grinding.

**TOOTH:**

DP

**RLT-ultra-hogger**

D mm	B mm	d mm	Z	R/L	LZ	Hogger bayonet	Hogger with 4 ph	Hogger with sleeve	Hogger with hydro sleeve
						Order No.	Order No.	Order No.	Order No.
For quick clamping system 192									
250	10	80	36	lhs.	○	10152818	10157148	10152874	10152880
250	10	80	36	rhs.	○	10152819	10157149	10152875	10152881
250	10	80	48	lhs.	○	10152820	10157150	10152876	10152883
250	10	80	48	rhs.	○	10152822	10157151	10152877	10152884
250	10	80	60	lhs.	◆	10152823	10157152	10152878	10152885
250	10	80	60	rhs.	◆	10152825	10157153	10152879	10152886
For quick clamping system 160									
250	10	60	36	lhs.	○	10152826			
250	10	60	36	rhs.	○	10152827			
250	10	60	48	lhs.	○	10152828			
250	10	60	48	rhs.	○	10152829			
250	10	60	60	lhs.	○	10152830			
250	10	60	60	rhs.	○	10152831			

S AWBLADES  
H HOGGERS  
C UTTER WITH BORE  
S HANK TYPE CUTTERS  
D RILLS  
K NIVES  
C LAMPING SYSTEM  
C  
DP - TOOLS  
A CCESSORIES

## Segment hogger with Fixmatic quick clamping system



Fig: Right-hand design

0034

APPLICATION:	For sizing panel material
MATERIAL:	Derived timber material - panels with or without coating
MACHINE:	Double-end profiler and edge bander
DESIGN:	Hogger with steel body with inserted carbide-tipped segments with carbide tipped sawblade, flat teeth. Mounted to the Fixmatic quick clamping system.
TOOTH:	HW, DP on demand

D mm	B mm	d mm	Z	R/L	Order No.
with Fixmatic P: D = 147 mm					
205	20	35 DKN	44/ 12	lhs	003420035
205	20	35 DKN	44/ 12	rhs	003420036
205	20	40 DKN	44/ 12	lhs	003420042
205	20	40 DKN	44/ 12	rhs	003420043
205	20	35 DKN	60/ 12	lhs	003420135
205	20	35 DKN	60/ 12	rhs	003420136
205	20	40 DKN	60/ 12	lhs	003420142
205	20	40 DKN	60/ 12	rhs	003420143
with Fixmatic P: D = 192 mm					
255	20	35 DKN	48/ 18	lhs	003425035
255	20	35 DKN	48/ 18	rhs	003425036
255	20	40 DKN	48/ 18	lhs	003425042
255	20	40 DKN	48/ 18	rhs	003425043
255	20	35 DKN	60/ 18	lhs	003425135
255	20	35 DKN	60/ 18	rhs	003425136
255	20	40 DKN	60/ 18	lhs	003425142
255	20	40 DKN	60/ 18	rhs	003425143

### Spare hogger with HW saw blade. Suitable for Fixmatic P quick clamping system



D mm	B mm	d mm	Z	R/L	Order No.
205	20	75	44/ 12	lhs	003420235
205	20	75	44/ 12	rhs	003420236
205	20	75	60/ 12	lhs	003420335
205	20	75	60/ 12	rhs	003420336
255	20	80	48/ 18	lhs	003425235
255	20	80	48/ 18	rhs	003425236
255	20	80	60/ 18	lhs	003425335
255	20	80	60/ 18	rhs	003425336

**Segment hogger**

Spare parts for AKE Segment hogger 0034

**0032/0033****Spare HW saw blade (Flat tooth). Suitable for Segment hogger**

D mm	B mm	b mm	d mm	pin hole mm	Z	R/L	Order No.
205	4	2,8	80	4/10/140	44F	lhs	003220101
205	4	2,8	80	4/10/140	44F	rhs	003220201
205	4	2,8	80	4/10/140	60F	lhs	003220301
205	4	2,8	80	4/10/140	60F	rhs	003220401
255	4	2,8	100	6/10/190	48F	lhs	003225501
255	4	2,8	100	6/10/190	48F	rhs	003225502
255	4	2,8	100	6/10/190	60F	lhs	003225503
255	4	2,8	100	6/10/190	60F	rhs	003225504

**Spare Fixmatic P quick clamping system**

D mm	Bezeichnung	d mm	Order No.
147	for hogger D=205	35 DKN	003814735
147	for hogger D=205	40 DKN	003814746
192	for hogger D=255	35 DKN	003819235
192	für hogger D=255	40 DKN	003819246

**Spare parts for Fixmatic P quick clamping system**

Denomination	Order No.
Pneumatic spiral hose	003800005

**Spare segments and screws**

Denomination	Order No.
HW segment with chip breaker, with threaded pin. 1 PU (= 12 pcs)	003301201
HW segment without chip breaker, with threaded pin. 1 PU (=12 pcs)	003301400
Threaded pin. 1 PU (=24 pcs)	003302402
Screw (Torx) M5x12 c/s 10 for saw blade 1 PU (=50 pcs)	003105002
Screw (hexagon socket) M 8x16	003105005
Screw (countersunk) M 8x12.6	003105006
Torx screw driver T20 suitable for (torx) screw M5	10006041

DP segment available on demand

## Segment hogger with flange sleeve



Fig: Right-hand design

APPLICATION:	For sizing panel material
MATERIAL:	Derived timber material, panels with or without coating
MACHINE:	Double-end profiler and edge bander
DESIGN:	Hogger with steel body with inserted carbide-tipped segments with carbide tipped sawblade, flat teeth. Mounted on flange sleeve
TOOTH:	HW / DP on demand

0033

D mm	B mm	d mm	Z	R/L	Order No.
205/ 200	20	35 DKN	44/ 12	lhs	003320031
205/ 200	20	35 DKN	44/ 12	rhs	003320001
205/ 200	40	35 DKN	44/ 24	lhs	003320032
205/ 200	40	35 DKN	44/ 24	rhs	003320002
205/ 200	60	35 DKN	44/ 36	lhs	003320033
205/ 200	60	35 DKN	44/ 36	rhs	003320003
205/ 200	20	35 DKN	60/ 12	lhs	003320041
205/ 200	20	35 DKN	60/ 12	rhs	003320010
205/ 200	40	35 DKN	60/ 24	lhs	003320042
205/ 200	40	35 DKN	60/ 24	rhs	003320012
205/ 200	60	35 DKN	60/ 36	lhs	003320043
205/ 200	60	35 DKN	60/ 36	rhs	003320013
255/ 250	20	35 DKN	48/ 18	lhs	003325031
255/ 250	20	35 DKN	48/ 18	rhs	003325001
255/ 250	40	35 DKN	48/ 36	lhs	003325032
255/ 250	40	35 DKN	48/ 36	rhs	003325002
255/ 250	60	35 DKN	48/ 54	lhs	003325033
255/ 250	60	35 DKN	48/ 54	rhs	003325003
255/ 250	20	35 DKN	60/ 18	lhs	003325041
255/ 250	20	35 DKN	60/ 18	rhs	003325010
255/ 250	40	35 DKN	60/ 36	lhs	003325042
255/ 250	40	35 DKN	60/ 36	rhs	003325012
255/ 250	60	35 DKN	60/ 54	lhs	003325043
255/ 250	60	35 DKN	60/ 54	rhs	003325013

**Segment hogger**

Spare parts for AKE Segment hogger 0033



0032/0033

**Spare HW saw blade (Flat tooth). Suitable for Segment hogger**

D mm	B mm	b mm	d mm	Pin holes mm	Z	R/L	Order No.
205	4	2,8	80	4/10/140	44F	lhs	003220101
205	4	2,8	80	4/10/140	44F	rhs	003220201
205	4	2,8	80	4/10/140	60F	lhs	003220301
205	4	2,8	80	4/10/140	60F	rhs	003220401
255	4	2,8	80	6/10/190	48F	lhs	003225102
255	4	2,8	80	6/10/190	48F	rhs	003225202
255	4	2,8	80	6/10/190	60F	lhs	003225302
255	4	2,8	80	6/10/190	60F	rhs	003225402

**Spare hogger /extension for type 33 D=200x18x80 Z=12**

D mm	B mm	d mm	Z/Seg.	R/L	Order No.
200	18	80	12	lhs	003320003
200	18	80	12	rhs	003320004

**Spare hogger / extension for type 33 D=250x18x80 Z=18**

D mm	B mm	d mm	Z/Seg.	R/L	Order No.
200	18	80	18	lhs	003325003
200	18	80	18	rhs	003325004

**Spare flange sleeve. Suitable for segment hogger, vario hogger and saw blade segment hogger**

D mm	d mm	for hogger bore mm	Order No.
115	35 DKN	80	003300002
115	40 DKN	80	003300001

**Spare segments and screws**

Bezeichnung	Order No.
HW segment with chip breaker, with threaded pin. 1 PU (= 12 pcs)	003301201
HW segment without chip breaker, with threaded pin. 1 PU (=12 pcs)	003301400
Threaded pin. 1 PU (=24 pcs)	003302402
Screw (Torx) M5x12 c/s 10 for saw blade 1 PU (=50 pcs)	003105002
Screw (hexagon socket) M 8x16	003105005
Screw (countersunk) M 8x12.6	003105006
Torx screw driver T20 suitable for (torx) screw M5	10006041

DP segment available on demand

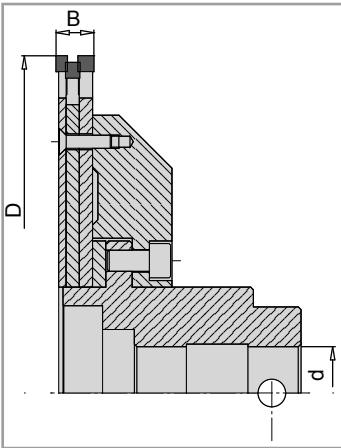
## Vario hogger

### hogger with flange sleeve



Fig.: Right-hand design

0033/7033



APPLICATION:	For sizing panel material. For sizing of derived timber material on multi-rip saw without flange sleeve
MATERIAL:	Solid wood, derived timber material with or without coating
MACHINE:	Double-end profiler, multi-rip machines
DESIGN:	Hogger with steel body. Sawblade with axial angle for improved chip removal
TOOTH:	HW, DP

D mm	B mm	d mm	Z	Quality	R/L	LZ	Order No.
255	14,4	35	48/ 12/ 6	DP	lhs	◆	703325681
255	14,4	35	48/ 12/ 6	DP	rhs	◆	703325680
255	14,4	40	48/ 12/ 6	HW	lhs		003325781
255	14,4	40	48/ 12/ 6	HW	rhs		003325780
255	14,4	40	48/ 12/ 6	DP	lhs	◆	703325881
255	14,4	40	48/ 12/ 6	DP	rhs	◆	703325880
255	14,4	35	48/ 12/ 6	HW	lhs		003325581
255	14,4	35	48/ 12/ 6	HW	rhs		003325580
255	14,4	35	60/ 12/ 6	DP	lhs	◆	703325683
255	14,4	35	60/ 12/ 6	DP	rhs	◆	703325682
255	14,4	40	60/ 12/ 6	HW	lhs		003325783
255	14,4	40	60/ 12/ 6	HW	rhs		003325782
255	14,4	40	60/ 12/ 6	DP	lhs	◆	703325883
255	14,4	40	60/ 12/ 6	DP	rhs	◆	703325882
255	14,4	35	60/ 12/ 6	HW	lhs		003325583
255	14,4	35	60/ 12/ 6	HW	rhs		003325582

## Vario hogger spare saw blade



0032/0033

### HW Spare saw blade one-side acute with axial angle. Suitable for vario hogger with a flange sleeve

D mm	B mm	b mm	d mm	Z	R/L	Order No.
250	5,5	5,0	80	12F m. Achsw.	lhs	003325084
250	5,5	5,0	80	12F m. Achsw.	rhs	003325086
255	7,0	5,0	80	6F m. Achsw.	lhs	003325589
255	7,0	5,0	80	6F m. Achsw.	rhs	003325588
255	4,0	2,8	80	48E m. Achsw.	lhs	003225585
255	4,0	2,8	80	48E m. Achsw.	rhs	003225584
255	4,0	2,8	80	60E m. Achsw.	lhs	003225587
255	4,0	2,8	80	60E m. Achsw.	rhs	003225586

### 7032/7033 DP spare sawblade, one-side acute with axial angle. Tip height 5 mm. Suitable for vario hogger with a flange sleeve

D mm	B mm	b mm	d mm	Z	R/L	LZ	Order No.
250	5,5	5,00	80	12F	lhs	◆	703325081
250	5,5	5,00	80	12F	rhs	◆	703325082
255	6,0	5,00	80	12/ 6F	lhs	◆	703325583
255	6,0	5,00	80	12/ 6F	rhs	◆	703325584
255	4,3	2,80	80	36F	lhs	◆	703225587
255	4,3	2,80	80	36F	rhs	◆	703225586
255	4,3	2,80	80	48F	lhs	◆	703225581
255	4,3	2,80	80	48F	rhs	◆	703225582
255	4,3	2,80	80	60F	lhs	◆	703225583
255	4,3	2,80	80	60F	rhs	◆	703225584
260	5,0	4,00	80	12/ 6F	lhs	◆	703326085
260	5,0	4,00	80	12/ 6F	rhs	◆	703326086

### Spare flange sleeve. Suitable for segment hogger, vario hogger and sawblade segment hogger

D mm	d mm	for hogger bore mm	Order No.
115	35 DKN	80	003300002
115	40 DKN	80	003300001

SAWBLADES

S

HOGGERS

H

CUTTER WITH BORE

C

SHANK TYPE CUTTERS

S

DRILLS

D

KNIVES

K

CLAMPING SYSTEM

C

DP - TOOLS

DP

ACCESSORIES

A

## Saw blade segment hogger Hogger with flange sleeve



Fig.: Right-hand design

0033

APPLICATION:	Sizing with scoring / hogging and double-hogging
MATERIAL:	Derived timber material - panels with or without coating
MACHINE:	Double-end profiler and edge bander
DESIGN:	Hogger with steel body and reversible saw segments. Segments with axial angle for optimized chip removal Sizing with scoring/ hogging or double-hogging
TOOTH:	HW

D mm	B mm	d mm	Z	R/L	Order No.
250	18	35 DKN	48F+ 6x4	lhs	003325131
250	18	35 DKN	48F+ 6x4	rhs	003325101
250	18	40 DKN	48F+ 6x4	lhs	003325241
250	18	40 DKN	48F+ 6x4	rhs	003325210

### Built-up hogger applied to increase the kerf to 36 mm by means of HW segments

D mm	B mm	d mm	Z	R/L	Order No.
250	18	80	6x4	lhs	003324920
250	18	80	6x4	rhs	003324901

### With Bajonett fitting for Fixmatic P quick clamping system D 192 mm. With HW segments and HW saw blade (Flat tooth)

D mm	B mm	d mm	Z	R/L	Order No.
250	18	80	48F+ 6x4	lhs	003324920
250	18	80	48F+ 6x4	rhs	003324921
250	18	80	72F+ 6x4	lhs	003324924
250	18	80	72F+ 6x4	rhs	003324925

Built-up hogger available on demand

### Spare flange sleeve. Suitable for segment hogger, vario hogger and saw blade segment hogger

D mm	d mm	for hogger bore mm	Order No.
115	35 DKN	80	003300002
115	40 DKN	80	003300001

## Saw blade segment hogger

### Spare saw blade and segment



0032/7032

#### Spare HW saw blade for AKE and Leuco hogger

D mm	B mm	b mm	d mm	pin hole mm	Z	R/L	Order No.
200	4	2,8	80	4/10/140	40F	lhs	003220140
200	4	2,8	80	4/10/140	40F	rhs	003220240
200	4	2,8	80	4/10/140	60F	lhs	003220340
200	4	2,8	80	4/10/140	60F	rhs	003220440
220	4	2,8	80	6/10/154	60F Achsw.	lhs	003222141
220	4	2,8	80	6/10/154	60F Achsw.	rhs	003222241
250	4	2,8	80	6/10/200	48F	lhs	003225008*
250	4	2,8	80	6/10/200	48F	rhs	003225009*
250	4	2,8	80	6/10/200	72F	lhs	003225180*
250	4	2,8	80	6/10/200	72F	rhs	003225080*
250	4	2,8	100	6/10/200	72F	lhs	003225110*
250	4	2,8	100	6/10/200	72F	rhs	003225010*
255	4	2,8	100	6/10/200	48F	lhs	003225541
255	4	2,8	100	6/10/200	48F	rhs	003225641
255	4	2,8	80	6/10/200	54F	lhs	003225741
255	4	2,8	80	6/10/200	54F	rhs	003225841

#### Spare DP saw blade with axial angle

D mm	B mm	b mm	d mm	pin hole mm	Z	R/L	LZ	Order No.
250	4	2,8	80	6/10/200	36F	lhs	◆	703225007*
250	4	2,8	80	6/10/200	36F	rhs	◆	703225008*
250	4	2,8	80	6/10/200	48F	lhs	◆	703225009*
250	4	2,8	80	6/10/200	48F	rhs	◆	703225011*
250	4	2,8	80	6/10/200	60F	lhs	◆	703225021*
250	4	2,8	80	6/10/200	60F	rhs	◆	703225022*
250	4	2,8	80	6/10/200	72F	lhs	◆	703225023*
250	4	2,8	80	6/10/200	72F	rhs	◆	703225024*

#### Spare HW segment. Suitable for system AKE and Leuco



0452/0453

D mm	Z	R/L	Order No.
200	4		045200004
200/250	4 with axial angle	lhs	045200204
200/250	4 with axial angle	rhs	045200104
250	4		045200007
250	4K	lhs	045201204
250	4K	rhs	045201104
300	8	lhs	045300208
300	8	rhs	045300108
300	10	lhs	045300220
300	10	rhs	045300120
350/430	8	lhs	045350208
350/430	8	rhs	045350108
350/430	10	lhs	045350210
350/430	10	rhs	045350110

\*Suitable for AKE and Leuco

S  
H  
C  
S  
D  
K  
C  
DP -  
A

AWBLADES  
HOGGERS  
CUTTER WITH BORE  
HANK TYPE CUTTERS  
RILLS  
NIVES  
LAMPING SYSTEM  
TOOLS  
CESSORIES

## Spare saw blade without pin holes

Spare HW saw blade, without pin holes. For universal application even with external brands. Please indicate the type and brand of the hogger in order to match the pin holes and gaps.

D mm	B mm	b mm	d mm	Z	Order No.
205	4	2,8	80	44F	003220200
205	4	2,8	80	60F	003220400
210	4	2,8	80	44F	003221200
210	4	2,8	80	60F	003221400
255	4	2,8	80	48F	003225200
255	4	2,8	80	60F	003225400
260	4	2,8	80	48F	003226600
260	4	2,8	80	60F	003226800
260	4	2,8	80	72F	003226010

S  
AWBLADESH  
OGGERSC  
UTTER WITH BORES  
HANK TYPE CUTTERSD  
RILLSK  
NIVESC  
LAMPING SYSTEM

DP - TOOLS

A  
CCESSORIES

**Scoring saw blade**

## Scoring saw blade with flange sleeve



Fig.: Right-hand design

**0030/0031**

APPLICATION:	Scoring and sizing
MATERIAL:	Derived timber material-panels with or without coating
MACHINE:	Double-end profiler and edge bander
DESIGN:	*= For AKE / Leuco quick clamping system
TOOTH:	HW

D mm	B mm	b mm	d mm	Z	R/L	Order No.
180	3,2	2,2	30 DKN	42F	lhs	003175114
180	3,2	2,2	30 DKN	42F	rhs	003175115
180	3,2	2,2	30 DKN	54F	lhs	003175014
180	3,2	2,2	30 DKN	54F	rhs	003175015

**Spare HW or DP saw blade. DP tip height 5 mm.  
Suitable for scoring sawblade with flange sleeve**

D mm	B mm	b mm	d mm	Z	Qualität	R/L	LZ	Order No.
180	3,2	2,2	65	36F	DP	lhs	◆	703018010
180	3,2	2,2	65	36F	DP	rhs	◆	703018011
180	3,2	2,2	65	42F	HW	lhs		003018008
180	3,2	2,2	65	42F	HW	rhs		003018009
180	3,2	2,2	65	42F	DP	lhs	◆	703018008
180	3,2	2,2	65	42F	DP	rhs	◆	703018009
180	3,2	2,2	65	48F	DP	lhs	◆	703018006
180	3,2	2,2	65	48F	DP	rhs	◆	703018007
180	3,2	2,2	65	54F	HW	lhs		003018006
180	3,2	2,2	65	54F	HW	rhs		003018007

**Spare flange sleeve, suitable for scoring sawblade**

D mm	d mm	for scoring saw blade bore mm	Order No.
108	30 DKN	65	003100014

**Spare screw**

Denomination	Order No.
Screw (Torx) M5x12 SK9 for saw blade 1 PU (=50 pcs)	003105001
Screw (Torx) M5x12 SK10 for saw blade 1 PU (=50 pcs)	003105002
Torx screw driver T 20 for (Torx) screw M5	10006041

## Scoring saw blade with Fixmatic P quick clamping system



Fig.: Right-hand design

APPLICATION:	Scoring with the feed in order to produce clean edges without chipping
MATERIAL:	Derived timber material - panels with or without coating
DESIGN:	Scoring sawblade, suitable for clamping flange and Fixmatic quick-clamping system
TOOTH:	HW

0038

D mm	B mm	b mm	d mm	Z	R/L	Order No.
180	3,2	2,2	30 DKN	30F	lhs	003818031
180	3,2	2,2	30 DKN	30F	rhs	003818032
180	3,2	2,2	30 DKN	42F	lhs	003818131
180	3,2	2,2	30 DKN	42F	rhs	003818132
180	3,2	2,2	30 DKN	54F	lhs	003818231
180	3,2	2,2	30 DKN	54F	rhs	003818232
200	3,2	2,2	30 DKN	48F	lhs	003820031
200	3,2	2,2	30 DKN	48F	rhs	003820032
200	3,2	2,2	30 DKN	60F	lhs	003820131
200	3,2	2,2	30 DKN	60F	rhs	003820132

### Spare Fixmatic P quick clamping system. Suitable for scoring sawblade for Fixmatic P quick clamping system

D mm	d mm	scoring blade bore mm	Order No.
110	30 DKN	50	003811030

### Spare clamping flange. Suitable for Fixmatic quick clamping system

D mm	for montage	R/L	Order No.
110	between clamping flange (interior)	lhs	003811049
110	between clamping flange (interior)	rhs	003811050
110	before clamping flange (exterior)	lhs	003811051
110	before clamping flange (exterior)	rhs	003811052

## Scoring saw blade

Spare scoring sawblade for AKE and other systems



### 0030

APPLICATION:	Scoring and sizing
MATERIAL:	Derived timber material - panels with or without coating
MACHINE:	Double-end profiler and edge bander
DESIGN:	*= For AKE / Leuco quick clamping system
TOOTH:	HW

D mm	B mm	b mm	d mm	NL mm	Z	Order No.
150	3,2	2,2	30		30F	003015030
150	3,2	2,2	30		48F	003015031
180	3,2	2,2	30		30F	003018034
180	3,2	2,2	50	3/22/80 + 3/6/80	30F	003018051*
180	3,2	2,2	30		42F	003018033
180	3,2	2,2	50	3/22/80 + 3/6/80	42F	003018050*
180	3,2	2,2	30		54F	003018031
180	3,2	2,2	50	3/22/80 + 3/6/80	54F	003018052*
200	3,2	2,2	30		36F	003020030
200	3,2	2,2	30		48F	003020031
200	3,2	2,2	50	3/22/80 + 3/6/80	48F	003020051*
200	3,2	2,2	30		60F	003020033
200	3,2	2,2	50	3/22/80 + 3/6/80	60F	003020053*
255	3,2	2,2	30		60F	003025531
305	3,2	2,2	30		54F	003030531
305	3,2	2,2	30		72F	003030533
355	4,4	3,0	30		72F	003035530

\*Suitable for AKE and Leuco quick clamping systems.