

Planing cutter head.....	146-151
Bevel cutter.....	152-153
Rebate cutter.....	154
Grooving cutter.....	155-162
Radius cutter.....	163
Profile cutter.....	164-170
Panel raising cutter.....	171
Glue joint cutter.....	172
Edge trimming cutter.....	173

Planing cutter head

Planing cutter head with clamping wedge

**33030**

APPLICATION:	For pre and finish planing
MATERIAL:	Hard and soft wood
MACHINE:	Four-sided profile cutting and planing machine
DESIGN:	Steel cutter head re-sharpenable HS planer knives 30x3 mm HW planer knives can be ordered separately
TOOTH:	HS

D mm	B mm	d mm	d (max) mm	Z	Order No.
125	80	30	40	4	10156831
125	100	30	40	4	10156835
125	130	30	40	4	10156836
125	150	30	40	4	10156840
125	180	30	40	4	10156837
125	210	30	40	4	10156838
125	230	30	40	4	10156839

Further dimensions on demand
Available with HW planer knives at a premium

Spare parts

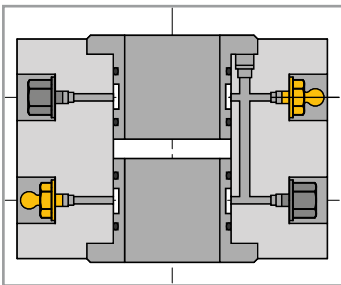
Denomination	Dimension mm	LZ	Order No.
Clamping wedge	80x21,7x12	◇	10157182
Clamping wedge	100x21,7x12	◇	10157183
Clamping wedge	130x21,7x12	◇	10157222
Clamping wedge	150x21,7x12	◇	10157223
Clamping wedge	180x21,7x12	◇	10157336
Clamping wedge	210x21,7x12	◇	10157227
Clamping wedge	230x21,7x12	◇	10157335
Screw	M12x20	◇	10157171
Key	SW6	◇	40005681

Planing cutter head

Hydraulic planing cutter head with clamping wedge

**33030**

APPLICATION:	For super finish planing, chip removal 0.5 - 0.8 mm
MATERIAL:	Hard and soft wood
DESIGN:	Steel body, planer knife 30x3 mm
TOOTH:	HS
FEED:	MEC



D mm	B mm	d mm	Z	n (max) min ⁻¹	LZ	Order No.
143	150	40	6	9.000	◇	10156775
163	100	50	6	8.000	◇	10156777
163	150	50	6	8.000	◇	10156780
163	150	50	8	8.000	◇	10156781

Further dimensions on demand
 HS knives in the scope of delivery. Not mounted.

Spare parts

Denomination	Dimension mm	LZ	Order No.
Clamping wedge	100x21,7x12	◇	10157183
Clamping wedge	150x21,7x12	◇	10157223
Screw	M12x20	◇	10157171
Key	SW6	◇	40005681

SAWBLADES

HOGGERS

CUTTER WITH BORE

SHANK TYPE CUTTERS

DRILLS

KNIVES

CLAMPING SYSTEM

DP - TOOLS

ACCESSORIES

Planing cutter head

Planing cutter head with centrifugal clamping

**33030**

APPLICATION:	For pre and finish planing
MATERIAL:	Hard and soft wood
DESIGN:	Steel body with TOK n (min) 6.000 rpm / n (max) 10.000 rpm
TOOTH:	HS TOK system Centrolock
FEED:	MEC

D mm	B mm	d mm	Z	n (max) min ⁻¹	LZ	Order No.
125	80	40	4	10.000	◇	10156560
125	100	40	4	10.000	◇	10156599
125	130	40	4	10.000	◇	10156606
125	150	40	4	10.000	◇	10156608
125	180	40	4	10.000	◇	10156609
125	230	40	4	10.000	◇	10156613

Can be re-sharpened once. For spare knives please see chapter "Knives"

Spare parts

Denomination	Dimension mm	LZ	Order No.
Clamping wedge	80x17,9x12	◇	10157242
Clamping wedge	100x17,9x12	◇	10157243
Clamping wedge	130x17,9x12	◇	10157244
Clamping wedge	150x17,9x12	◇	10157245
Clamping wedge	180x17,9x12	◇	10157246
Clamping wedge	230x17,9x12	◇	10157247
Screw	M12x20	◇	10157171
Key	SW6	◇	40005681

Planing cutter head

Planing cutter head Powerlock with centrifugal clamping

**33030**

APPLICATION:	For pre and finish planing
MATERIAL:	Hard and soft wood
MACHINE:	Weinig Powermat
DESIGN:	Steel body, with HSK 85 holder for Weinig Powerlock system
TOOTH:	HS TOK system Centrolock
FEED:	MEC

D mm	B mm	d mm	Z	n (max) min ⁻¹	LZ	Order No. rhs	Order No. lhs
93	60	HSK63WE	2	12.000	◇	10157280	10157281
93	80	HSK63WE	2	12.000	◇	10157282	10157283
93	100	HSK63WE	2	12.000	◇	10157284	10157285
93	130	HSK63WE	2	12.000	◇	10157286	10157287
93	150	HSK63WE	2	12.000	◇	10157288	10157289
93	170	HSK63WE	2	12.000	◇	10157290	10157291
93	190	HSK63WE	2	12.000	◇	10156806	10156807
93	210	HSK63WE	2	12.000	◇	10157292	10157293
93	240	HSK63WE	2	12.000	◇	10157294	10157295

Can be re-sharpened once. For spare knives please see chapter "Knives"

Spare parts

Denomination	Dimension mm	LZ	Order No.
Clamping wedge	60x17,9x12	◇	10157230
Clamping wedge	80x17,9x12	◇	10157242
Clamping wedge	100x17,9x12	◇	10157243
Clamping wedge	130x17,9x12	◇	10157244
Clamping wedge	150x17,9x12	◇	10157245
Clamping wedge	170x17,9x12	◇	10157239
Clamping wedge	190x17,9x12	◇	10157184
Clamping wedge	210x17,9x12	◇	10157240
Clamping wedge	240x17,9x12	◇	10157241
Screw	M12x20	◇	10157171
Key	SW6	◇	40005681

SAWBLADES

S

HOGGERS

H

CUTTER WITH BORE

C

SHANK TYPE CUTTERS

S

DRILLS

D

KNIVES

K

CLAMPING SYSTEM

C

DP - TOOLS

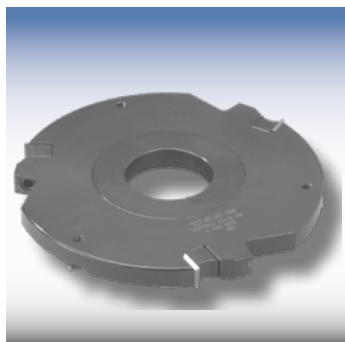
DP

ACCESSORIES

A

Planing cutter head

TOK cutter for guiding rebate

**33010**

APPLICATION:	To be combined with a planing cutter head
MATERIAL:	Hard and soft wood
DESIGN:	Cutter head with TOK and spurs
TOOTH:	HW
FEED:	MEC

D mm	B mm	d mm	Z	n (max) min ⁻¹	LZ	Order No.
145	12	40	2/V2	11.000	◇	10156620

Spare parts

Denomination	Dimension mm	LZ	Order No.
HW TOK	12x12x1,5 Z4	◇	10009450
Clamping wedge	10	◇	10028146
Screw	M 8x16	◇	40002009
HW spur	14x14x2,0 Z4	◇	10009453
Screw	M 5x6	◇	40001968
Key	SW 4	◇	40004852

Planing cutter head

Spiral planing cutter head



33010

APPLICATION:	For pre planing
MATERIAL:	Hard and soft wood
MACHINE:	Four-sided profile cutting and planing machine
DESIGN:	Tool body made of light metal. Knife with radius for tear-free cuts and smooth surface, Z3 with 6 helix, therefore step-free overlaps.
TOOTH:	HW

D mm	B mm	d mm	Z	n (max) min ⁻¹	LZ	Order No.
125	100	40	3 (30)	10.000	◇	10156621
125	130	40	3 (36)	10.000	◇	10156623
125	180	40	3 (48)	10.000	◇	10156625
125	230	40	3 (60)	10.000	◇	10156627

Available with axial angle on demand.

Spare parts

Denomination	Dimension mm	LZ	Order No.
HW TOK	15x15x2,5 Z4	◇	10149346
Screw	M 5x14	◇	10110740

SAWBLADES

S

LOGGERS

H

CUTTER WITH BORE

C

SHANK TYPE CUTTERS

S

DRILLS

D

KNIVES

K

LAMPING SYSTEM

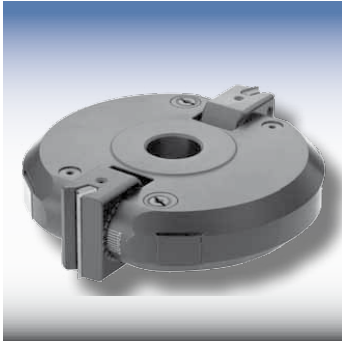
C

DP - TOOLS

DP

ACCESSORIES

A

Bevel cutter**Swivel cutter head****33010**

APPLICATION:	Joining, bevelling
MATERIAL:	Hard and soft wood, wood-based panel material
MACHINE:	Milling machine and sizing machine
DESIGN:	Tool body made of light metal. Infinitely swivelling (+/-90°) Rebate cutting with additional disc possible.
TOOTH:	HW
FEED:	MAN

D mm	B mm	d mm	Z	d (max) mm	n (max) min ⁻¹		LZ	Order No.
160	50	30	2	bis 50	5000-6000	Stahl	◇	10111453
200	80	30	2	bis 50	4500-5800	Alu	◇	10105274

Additional disc for rebate cutting available on demand.

Spare parts 10111453 (B=50)

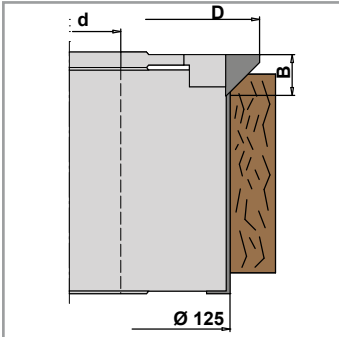
Denomination	Dimension mm	LZ	Order No.
HW TOK	50x12x1,5 Z2	◇	10009474
Clamping wedge	48	◇	10110635
Swivelling element	zu B = 50	◇	10110639

Spare parts 10105274 (B=80)

Denomination	Dimension mm	LZ	Order No.
HW TOK	80x13x2,2 Z2	◇	10009478
Clamping wedge	78	◇	10110637
Swivelling element	zu B = 80	◇	10112938

Bevel cutter

Bevel cutter 45°, HS and Bevel cutter TOK



33030

APPLICATION:	For chamfering combined with a planing cutter head
MATERIAL:	HS: Soft wood WP: Hard and soft wood
DESIGN:	HS Tipped cutters Bevel cutter TOK: Cutter head, steel body Weinig Standard
TOOTH:	HS HW TOK Z4
FEED:	MEC

HS bevel cutter

D mm	B mm	d mm	Z	n (max) min ⁻¹	rhs/lhs	Order No.
148	16	40	2	depends on the planer head	rhs	10015215
148	16	40	2	depends on the planer head	lhs	10015213

Available in HW as well

WP Bevel cutter

D mm	B mm	d mm	Z	n (max) min ⁻¹	rhs/lhs	Order No.
145	15	40	4	depends on the planer head	rhs	10026459
145	15	40	4	depends on the planer head	lhs	10031981

Spare parts

Denomination	Dimension mm	Order No.
HW TOK	15x15x2,5 Z4	40007373
Screw	M5x6,1	40005305

S AWBLADES

H LOGGERS

C UTTER WITH BORE

S HANK TYPE CUTTERS

D RILLS

K NIVES

C LAMPING SYSTEM

DP - TOOLS

A CCESSORIES

Rebate cutter

Rebate cutter



33010

APPLICATION:	tear-free jointing and rebating
MATERIAL:	Hard and soft wood, wood-based panel material
MACHINE:	Milling machine and sizing machine
DESIGN:	Cutter head, steel body
TOOTH:	HW TOK Z2 HW spurs Z4
FEED:	MAN

D mm	B mm	d mm	Z	LZ	Order No.
125	30	30	2/V4	◇	10156691
125	50	30	2/V4	◇	10156697
125	50	30	4/V4	◇	10156698
125	60	30	2/V4	◇	10010244

HW TOK

Allocation	Dimension mm	LZ	Order No.
for 10156691	30x12x1,5 Z2	◇	10009464
for 10156697, 10156698	50x12x1,5 Z2	◇	10009474
for 10010244	60x12x1,5 Z2	◇	10009476
Spur	14x14x2 Z4	◇	10009453

Clamping wedge

Allocation	Dimension mm	LZ	Order No.
for 10156691	28mm	◇	10023051
for 10156697, 10156698	48mm	◇	10017268
for 10010244	58mm	◇	10017269

Spare parts

Denomination	Dimension mm	LZ	Order No.
Countersunk screw	M5x8	◇	40001969
Clamping screw	M6x16	◇	40001998
Key	SW3	◇	10006089
Setting gauge	0,55mm	◇	10019459

Grooving cutter

HW Lamello grooving cutter

**33010**

APPLICATION:	Grooving for lamella plates
MATERIAL:	Hard and soft wood, wood-based panel material
MACHINE:	Power tools
DESIGN:	Tipped cutters
TOOTH:	HW
FEED:	MAN

D mm	B mm	d mm	Z	NL	n (max) min ⁻¹	Order No.
100	3.97	22	2/V4	4/4,5/36	7600-13300	10156629

SAWBLADES

HOGGERS

CUTTER WITH BORE

SHANK TYPE CUTTERS

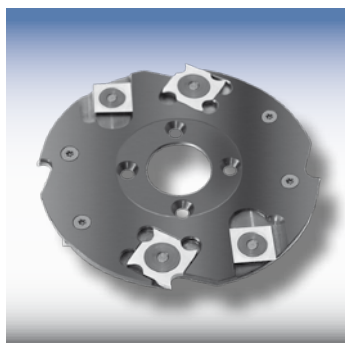
DRILLS

KNIVES

CLAMPING SYSTEM

DP - TOOLS

ACCESSORIES

Grooving cutter**Lamello grooving cutter TOK****33010**

APPLICATION:	Grooving for lamella plates
MATERIAL:	Wood and wood-based material with and without coating
MACHINE:	Power tools
DESIGN:	TOK, steel body, top and side cutting
TOOTH:	HW TOK Z4 , HW spurs Z4
FEED:	MAN

D mm	B mm	d mm	Z	n (max) min ⁻¹	LZ	Order No.
100	3.97	22	4/V4	7700-13200	◇	10156726

Spare parts:

Denomination	Dimension mm	LZ	Order No.
HW TOK	18x18x1,95 Z4	◇	10009494
HW spur	14x14x1,2 Z4	◇	10009452
Torx screw for scraper	D=11,8	◇	10157164
Clamping screw	D=9,8	◇	10006105
Key	T 9	◇	10006045
Setting gauge		◇	10020189

Grooving cutter**Lamello grooving cutter****33010**

APPLICATION:	For lamello grooves
MATERIAL:	Wood and panel material with and without coating
MACHINE:	Portable machines
TOOTH:	HW

With hub

D mm	B mm	d mm	Z	Order No.
100	3.97	22	12	235110022

Grooving cutter for Elu-Doublo DS140

Without hub

D mm	B mm	d mm	Z	Order No.
100	3.97	22	12	235310022

SAWBLADES

HOGGERS

CUTTER WITH BORE

SHANK TYPE CUTTERS

DRILLS

KNIVES

CLAMPING SYSTEM

DP - TOOLS

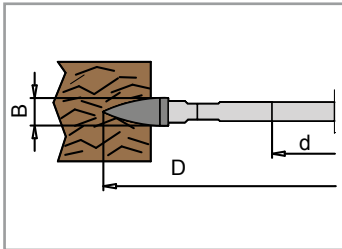
ACCESSORIES

Grooving cutter

Resin pocket cutter



35010

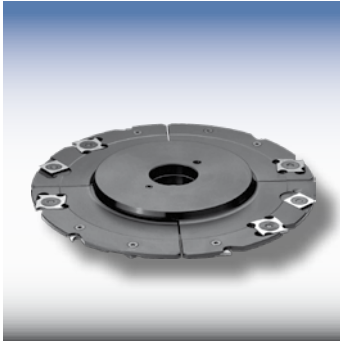


APPLICATION:	For milling resin pockets and damages
MATERIAL:	Solid wood
MACHINE:	Power tools
DESIGN:	Tipped cutters
TOOTH:	HW
FEED:	MAN

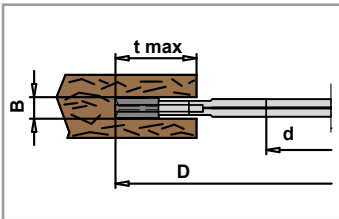
D mm	B mm	d mm	Z	n (max) min ⁻¹	LZ	Order No.
100	8	22	4	7600-13400	◇	10156729

Grooving cutter

TOK adjustable grooving cutter



33010



APPLICATION:	Cutting grooves on circular bench saws and milling machines
MATERIAL:	Hard and soft wood
MACHINE:	Bench-mounted milling machines
DESIGN:	TOK design with scrapers and spurs on both sides Body made of light metal. Grooving depth t (max.) 100 mm
TOOTH:	HW TOK Z 2 HW spurs Z4
FEED:	MAN

D mm	B mm	d mm	Z	d (max) mm	n (max) min ⁻¹	LZ	Order No.
250	8-15	30	4/V4	bis 50	3000 - 5000	◇	10157337

Spare parts:

Denomination	Dimension mm	LZ	Order No.
HW spurs	14x14x2	◇	10009453
Clamping wedge	6,5mm	◇	10157160
Screw	M5x6	◇	10006092
Clamping screw	M5x16	◇	40001987
Screw	M5x9	◇	10006093
Key	SW2,5	◇	10006088
Key	T9	◇	10006045
Setting gauge	0,25mm	◇	10157167

SAWBLADES

S

HOGGERS

H

CUTTER WITH BORE

C

SHANK TYPE CUTTERS

S

DRILLS

D

KNIVES

K

CLAMPING SYSTEM

C

DP - TOOLS

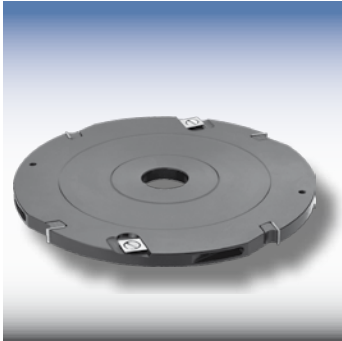
DP

ACCESSORIES

A

Grooving cutter

TOK grooving cutter



33010

APPLICATION:	For grooving along and across the grain
MATERIAL:	Hard and soft wood, wood-based panel material
MACHINE:	Milling machine and sizing machine
DESIGN:	Steel body
TOOTH:	HW TOK Z 2 / Z 4 HW spurs Z4
FEED:	MAN

D mm	B mm	d mm	Z	t (max) mm	LZ	Order No. cutter	Order No. clamping wedge
125	4	30	4+4	37	◇	10156888	
125	5	30	4+4	37	◇	10156889	
125	6	30	4+4	37	◇	10156890	
125	8	30	4+4	37	◇	10156891	10157160
125	10	30	4+4	37	◇	10156892	10157162
125	12	30	4+4	37	◇	10156893	10157163
150	4	30	4+4	49	◇	10156895	
150	5	30	4+4	49	◇	10156896	
150	6	30	4+4	49	◇	10156897	
150	8	30	4+4	49	◇	10156898	10157160
150	10	30	4+4	49	◇	10156899	10157162
150	12	30	4+4	49	◇	10156900	10157163

Spare knives / Spare parts

Allocation	Dimension mm	LZ	Order No.
Spurs for B = 4-6 mm	14x14x1,2	◇	10009452
Spurs for B = 8-12 mm	14x14x2,0	◇	10009453
TOK for B = 4 mm	18x18x1,95	◇	10009494
TOK for B = 5 mm	18x18x2,45	◇	10009495
TOK for B = 6 mm	18x18x2,95	◇	10009496
TOK for B = 8 mm	7,5x12x1,5	◇	10009449
TOK for B = 10 mm	9,6x12x1,5	◇	10009480
TOK for B = 12 mm	11,6x12x1,5	◇	10009483
Torx nut	D=9,8	◇	10006105
Torx nut	D=11,8	◇	10157164
Countersunk screw	M5x8	◇	40001969
Clamping screw	M6x16	◇	40001998
Key	SW3	◇	10006089
Setting gauge	0,55mm	◇	10019459

HW Adjustable grooving cutter with spacers

with spacers = 0,1 mm steigend

**33010**

APPLICATION:	For grooving along and across the grain
MATERIAL:	Wood and panel material with and without coating
MACHINE:	Spindle moulders and double end tenoners
DESIGN:	HW-tipped with wipers, flat, spurs on top and bottom, top and side cutting.
TOOTH:	HW

Plan tool body

D mm	B mm	d mm	Z	d (max) mm	n (max) min ⁻¹	t (max)	Order No.
120	1,8-3,4	30	6+6	30	6.000-12.000	12	10001957
120	2,2-4	30	6+6	30	6.000-12.000	15	10001958
140	2,2-4	30	6+6	30	6.000-12.000	15	10001960

Stepped tool body

D mm	B mm	d mm	Z	d (max) mm	n (max) min ⁻¹	t (max)	LZ	Order No.
140	2,5-4,8	30	4/V4	bis 50	5.500-9.500	15	◇	10023859
150	4-7,5	30	4/V4	bis 50	5.100-9.000	35	◇	10009619
150	7,5-14	30	4/V4	bis 50	5.100-9.000	35	◇	10009622
160	10-19	30	4/V4	bis 50	4.800-8.300	40	◇	40004980

Spare parts

Denomination	Dimension mm	LZ	Order No.
HW spur	14x14x2	◇	10009453
Clamping wedge	6,5mm	◇	10157160
Screw	M5x6	◇	10006092
Clamping screw	M5x16	◇	40001987
Screw	M5x9	◇	10006093
Key	SW2,5	◇	10006088
Key	T9	◇	10006045
Setting gauge	0,25mm	◇	10157167

S AWBLADES

H LOGGERS

C UTTER WITH BORE

S HANK TYPE CUTTERS

D RILLS

K NIVES

C LAMPING SYSTEM

DP - TOOLS

A CCESSORIES

Grooving cutter

Adjustable TOK grooving cutter with spacers



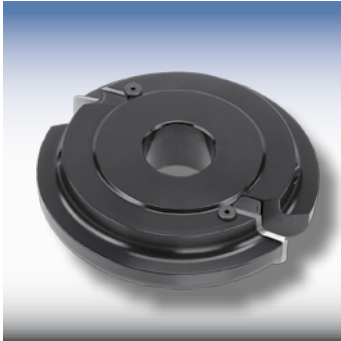
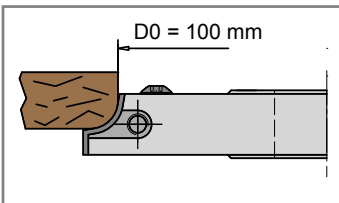
33010

APPLICATION:	For grooving along and across the grain
MATERIAL:	Hard and soft wood, wood-based panel material
DESIGN:	Steel body
TOOTH:	HW TOK Z 2 / Z 4 / HW spurs Z4
FEED:	MAN

D mm	B mm	d mm	Z	d (max) mm	n (max) min ⁻¹	t (max)	LZ	Order No.
160	8,0-15	30	4/V4	50	4.800-8.300	32	◇	10156634
160	12,6-24	30	4/V4	50	4.800-8.300	32	◇	10156636
180	8-15	30	4/V4	50	4.300-7.400	38	◇	10156637
180	12,6-24	30	4/V4	50	4.300-7.400	38	◇	10156638

Spare parts

Denomination	Dimension mm	LZ	Order No.
HW TOK for B = 8.0 - 15	7,5x12x1,5	◇	10009449
HW TOK for B = 12.6 - 24	12x12x1,5	◇	10009450
Clamping wedge for B = 8.0 - 15		◇	10157229
Clamping wedge for B = 12.6 - 24		◇	10028146
HW spur	14x14x2	◇	10009453
Threaded pin	M8x16	◇	40002009
Threaded pin	M5x16	◇	40001987
Slotted head screw	M5x8	◇	40001969
Slotted head screw	M5x6	◇	10119194
Key	SW4	◇	40004852
Key	SW 2,5	◇	10006088
Set of rings for B = 8 - 15 mm		◇	10157250
Set of rings for B = 12.6 - 24 mm		◇	10157251

Radius cutter**TOK quarter round cutter****35010**

APPLICATION:	Rounding
MATERIAL:	Hard and soft wood, wood-based panel material
DESIGN:	Steel body Size 1: suitable for R3 - R10 Size 2: suitable for R12 - 20 D 0 = 100 mm
TOOTH:	HW profile knives
FEED:	MAN

D mm	B mm	d mm	Z	d (max)	LZ	Order No.
120	20	30	2	40	◇	10156730
140	30	30	2	40	◇	10156731

Spare parts

Denomination	Dimension mm	LZ	Order No.
HW profile plate for 10156730	20x25x2 Gr.1 R8	◇	10157108
HW profile plate for 10156731	30x35x2 Gr.2 R12	◇	10157115
Clamping wedge for 10156730	17,5mm für Gr.1	◇	10157128
Clamping wedge for 10156731	26mm für Gr.2	◇	10157129
Screw	M4x6	◇	10157165
Clamping screw	M6x16	◇	40001998
Key	SW3	◇	10006089

SAWBLADES

S

HOGGERS

H

CUTTER WITH BORE

C

SHANK TYPE CUTTERS

S

DRILLS

D

KNIVES

K

CLAMPING SYSTEM

C

DP - TOOLS

DP

ACCESSORIES

A

Profile cutter

Universal safety cutter head, 40 mm kerf



35030

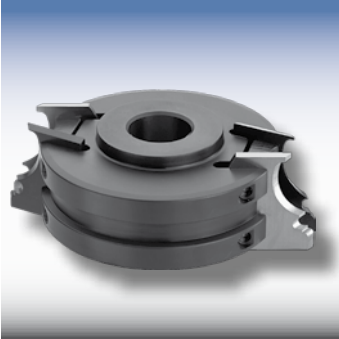
APPLICATION:	For jointing, rebating and profiling
MATERIAL:	Hard and soft wood
DESIGN:	Steel body For profiling depths of up to 17 mm, with a flying circle of 133 mm max.
TOOTH:	SP or HS
FEED:	MAN

D mm	B mm	d mm	Z	d (max) mm	n (max) min ⁻¹	LZ	Order No.
93	40	30	2	bis 31,75	6000 - 9000	◇	10023096

Standard and special profile knife catalogue available for downloading under:
www.ake.de

Profile cutter

Universal safety cutter head, 40 / 50 mm kerf



35030

APPLICATION:	For jointing, rebating and profiling
MATERIAL:	Hard and soft wood
DESIGN:	Steel body for profile knives with 40 and 50 mm kerf For profile depths up to 17 mm, with a flying circle of 150 mm max
TOOTH:	SP or HS
FEED:	MAN

D mm	B mm	d mm	Z	d (max)	n (max) min ⁻¹	LZ	Order No.
114	40 / 50	30	2	bis 31,75	5100-7900	◇	40015575

Standard and special profile knife catalogue available for downloading under:
www.ake.de

SAWBLADES

HOGGERS

CUTTER WITH BORE

SHANK TYPE CUTTERS

DRILLS

KNIVES

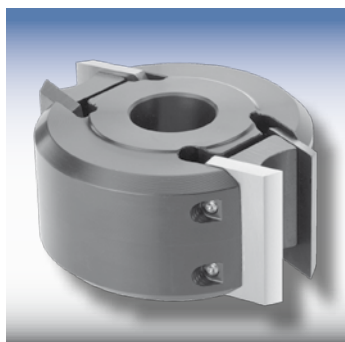
CLAMPING SYSTEM

DP - TOOLS

ACCESSORIES

Profile cutter

Universal safety cutter head, 60 - 80 mm kerf



35030

APPLICATION:	For profiling
MATERIAL:	Hard and soft wood
DESIGN:	Steel body for profile knives with 60 and 80 mm kerf, For profile depths up to 30 mm, with a flying circle of 182 mm max.
TOOTH:	HS
FEED:	MAN

D mm	B mm	d mm	Z	d (max)	LZ	Order No.
110	60 / 80	30	2	bis 40	◇	10156640

Standard and special profile knife catalogue available for downloading under: www.ake.de

Profile cutter

Serrated back profile cutter head



35030

APPLICATION:	For profiling
MATERIAL:	Hard and soft wood, wood-based panel material
DESIGN:	Steel body with high-precision serration to hold profile knife blanks of 8 or 10 mm thickness.
TOOTH:	HS, ST, HW, HW super pack
FEED:	MEC

D mm	B mm	d mm	Z	n (max) min ⁻¹	LZ	Order No. cutter	Order No. clamping wedge	Order No. dummy piece
122	40	40	2	9.000	◇	10156582	40011422	10110783
122	60	40	2	9.000	◇	10156586	10110631	10110785
122	80	40	2	9.000	◇	10156589	10110393	10110786
122	40	40	4	9.000	◇	10156590	40011422	10110783
122	60	40	4	9.000	◇	10156591	10110631	10110785
122	80	40	4	9.000	◇	10156594	10110393	10110786
122	100	40	4	9.000	◇	10156595	40011650	40011604
122	130	40	4	9.000	◇	10156596	10110395	40015377
122	150	40	4	9.000	◇	10156597	10110396	10110787
122	180	40	4	9.000	◇	10156598	10110638	10110788
122	230	40	4	9.000	◇	10156607	10110398	40012096
137	40	50	4	9.000	◇	10156612	40011422	10110783
137	60	50	4	9.000	◇	10156614	10110631	10110785
137	80	50	4	9.000	◇	10156615	10110393	10110786
137	100	50	4	9.000	◇	10156616	40011650	40011604
137	130	50	4	9.000	◇	10156617	10110395	40015377
137	150	50	4	9.000	◇	10156619	10110396	10110787
137	180	50	4	9.000	◇	10156622	10110638	10110788

Tool body without knives. For knife blanks see chapter knives.

Spare parts

Denomination	Dimension mm	LZ	Order No.
Threaded pin	M12x20	◇	10157171
Key	SW6	◇	40005681

Profile cutter

Profile cutter head Powerlock



Fig.: Z=2

35030

APPLICATION:	For profiling
MATERIAL:	Hard and soft wood, wood-based panel material
DESIGN:	Steel body with HSK 85 holder for Weing Powerlock system. With high-precision serration to hold profile knife blanks of 8 or 10 mm thickness.
TOOTH:	HS, ST, HW, HW super pack
FEED:	MEC

D mm	B mm	d mm	Z	n (max) min ⁻¹	LZ	Order No. re	Order No. li	Order No. Clamping wedge
90	60	HSK63WE	2	12.000	◇	10156783	10156796	10157181
90	80	HSK63WE	2	12.000	◇	10156792	10156801	10157182
90	100	HSK63WE	2	12.000	◇	10156795	10156802	10157183
90	130	HSK63WE	2	12.000	◇	10157212	10157216	10157222
90	150	HSK63WE	2	12.000	◇	10157217	10157219	10157223
90	170	HSK63WE	2	12.000	◇	10157254	10157253	10157224
90	190	HSK63WE	2	12.000	◇	10157256	10157255	10157225
90	210	HSK63WE	2	12.000	◇	10157258	10157257	10157227
90	240	HSK63WE	2	12.000	◇	10157260	10157259	10157228
90	60	HSK63WE	4	12.000	◇	10157264	10157261	10157181
90	80	HSK63WE	4	12.000	◇	10157262	10157265	10157182
90	100	HSK63WE	4	12.000	◇	10157266	10157263	10157183
90	130	HSK63WE	4	12.000	◇	10157268	10157267	10157222
90	150	HSK63WE	4	12.000	◇	10157270	10157269	10157223
90	170	HSK63WE	4	12.000	◇	10157272	10157273	10157224
90	190	HSK63WE	4	12.000	◇	10157274	10157275	10157225
90	210	HSK63WE	4	12.000	◇	10157276	10157277	10157227
90	240	HSK63WE	4	12.000	◇	10157278	10157279	10157228

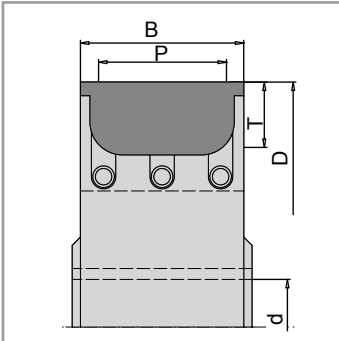
Tool body without knives.
For knife blanks see chapter knives.

Spare parts

Denomination	Dimension mm	LZ	Order No.
Threaded pin	M12x20	◇	10157171
Key	SW6	◇	40005681

Profile cutter

Multi - TOK profile cutter



35010

APPLICATION:	For profiling
MATERIAL:	Hard and soft wood, wood-based panel material
DESIGN:	Steel body with clamping elements. For holding HW special profile knives with support plate.
TOOTH:	HW profile knives
FEED:	MEC

D mm	B mm	d mm	Z	d (max) mm	P	T	Order No.
For mechanical feed							
160	40	35	3	up to 50	31	20	10018203
160	60	35	3	up to 50	51	25	10018202
180	60	35	4	up to 50	48	22	10028692
180	80	35	4	up to 50	60	30	10107420
For manual feed							
170	50	30	3	up to 50	41	18	10107426

Knives and support plates will be profiled according to customer demand.
 Profile drawings or wood samples are required.
 Special profile knives. 1 packing unit = 10 pcs.

Spare parts	10018203 (MEC)		10018202, 10028629 (MEC)	
	Denomination	Dimension (B) mm	Order No.	Dimension (B) mm
Blank	40x35x2,0 Z1	33009263	60x40x2,0 Z1	10014340
Clamping wedge	38	10016489	58	10016488
Threaded pin	M8x16	40002009	M8x16	40002009
Support plate		10019297		10023992
Stop screw	M5	40002938	M5	40002938

Spare parts	10107420 (MEC)		10107426 (MAN)	
	Denomination	Dimension (B) mm	Order No.	Dimension (B) mm
Blank	80x45x2,5 Z1	10023442	50x45x2,0 Z2	10017983
Clamping wedge	84	10021472	48	10018714
Threaded pin	M8x35	40002014	M8x16	40002009
support plate		33009948		40003550
Stop screw	M5	40002938	M5	40002938
Deflector				33010961

Profile cutter

TOK tongue and groove cutter



35010

APPLICATION:	For the production of tongue and groove profiles
MATERIAL:	Hard and soft wood, wood-based panel material
DESIGN:	Steel body By means of combining different tools a variety of profiles can be produced max 8000 rpm
TOOTH:	HW TOK Z 2 / Z 4 HW spurs Z 4
FEED:	MEC

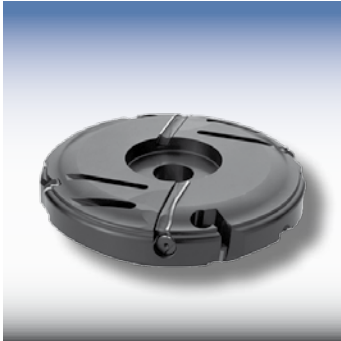
	D mm	B mm	d mm	Z	n(max) min ⁻¹	LZ	Order No.
1	140	15	60	4	8.000	◇	10156628
2	124	12	60	2	8.000	◇	10156683
3	140	15	60	4	8.000	◇	10156681
4	140	20	60	4	8.000	◇	10156685
5	141	20	60	4	8.000	◇	10156686
6	140	20	60	4	8.000	◇	10156687
7	154,4	11,6	60	2	8.000	◇	10156688
8	154,4	11,6	60	2	8.000	◇	10156689
9	171	15	60	4	8.000	◇	10156690
10	159	20	60	4	8.000	◇	10156692

Denomination	Dimension mm	LZ	Order No.
HW TOK	11,6x12x1,5	◇	10009483
HW TOK	12x12x1,5	◇	10009450
HW TOK	15x12x1,5	◇	10009455
HW TOK	20x12x1,5	◇	10009457
Clamping wedge for 2/7/8		◇	10157173
Clamping wedge for 1/3/9		◇	10157177
Clamping wedge for 4/5/6/10		◇	10157175
Spur	14x14x2	◇	10009453
Threaded pin for 2/9	M8x16	◇	40002009
Threaded pin	M8x12	◇	40002007
Slotted head screw	M5x8	◇	40001969
Grooving knife	25x13x4	◇	10157178
Screw for grooving knife	M5x13	◇	10157177
Key	SW4	◇	40004852
Key	SW3	◇	10006089
Kantenmesser 45°	22x16x5	◇	10109412

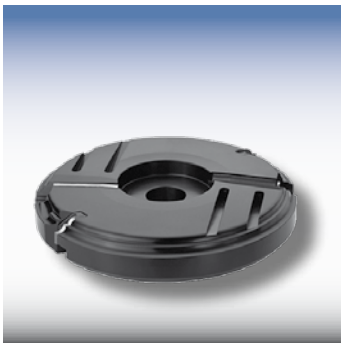
Drawings 1:1 available for download on the Internet under www.ake.de

Panel raising cutter

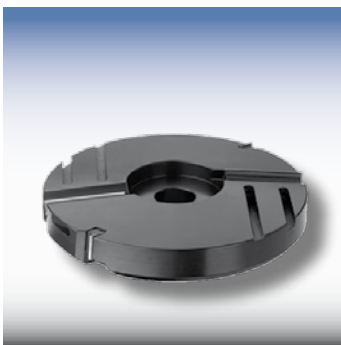
TOK panel raising cutter



Typ A

35010

Typ B



Typ C

APPLICATION:	For the production of panel raising profiles on furniture doors
MATERIAL:	Hard and soft wood, wood-based panel material
DESIGN:	Tool body made of light metal with profile knives and panel raising knives. Applied for right-hand rotation, top.
TOOTH:	HW profile knives
FEED:	MAN

D mm	B mm	d mm	Z	Design	LZ	Order No.
200	35	30	2+2	Typ A	◇	10156733
200	35	30	2+2	Typ B	◇	10156736
200	35	30	2+2	Typ C	◇	10156737

Spare knives

Denomination	Dimension mm	LZ	Order No. knives	Order No. Clamping wedge
Profiled TOK	20x12x1,5 Typ A	◇	10157117	10157130
Profiled TOK	20x23x2,0 Typ B	◇	10157118	10157134
Profiled TOK	20x12x1,5 Typ C	◇	10157119	10157155
Profiled TOK	60x12x1,5 Typ A	◇	10157125	10157132
Profiled TOK	50x12x1,5 Typ B	◇	10157126	10157136
Profiled TOK	60x12x1,5 Typ C	◇	10157127	10157156

Spare parts

Denomination	Dimension mm	LZ	Order No.
Slotted head screw	M6x10	◇	10157166
Threaded pin	M6x16	◇	40001998
Key	SW3	◇	10006089

Drawings 1:1 available for download on the Internet under www.ake.de

Glue joint cutter**TOK glue joint cutter****35010****APPLICATION:**

For glue joints. The profile and the counter profile are being cut with the same tool by changing the reference face.

MATERIAL:

Hard and soft wood

DESIGN:

Steel body with profile knives. Adjustable profile seat due to adjustable lateral stop screws

TOOTH:

HW TOK Z 2

FEED:

MAN

D mm	B mm	d mm	Z	Profile height = minimum wood thickness	LZ	Order No.
130	50	30	2	16	◇	10156745
130	60	30	2	24	◇	10156747
130	80	30	2	32	◇	10156748

Glue joint cutter for longitudinal glueing available on demand

Spare knives

Denomination	Dimension mm	LZ	Order No. Knives	Order No. Clamping wedges
für B = 50	50x24x2	◇	10157120	10157157
für B = 60	60x24x2	◇	10157123	10157158
für B = 80	80x24x2	◇	10157124	10157159



Fig: for B = 50 mm



Fig: for B = 60 mm



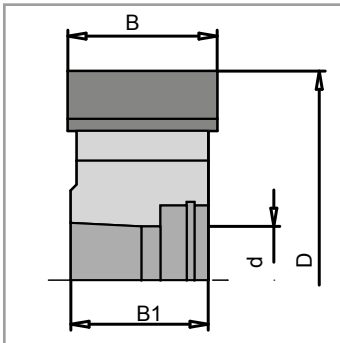
Fig: for B = 80 mm

Spare parts

Denomination	Dimension mm	LZ	Order No.
Clamping screw	M6x16	◇	40001998
Key	SW3	◇	10006089

Edge trimming cutter

HW cutter for flush milling

**35010**

APPLICATION:	Pre cutting
MATERIAL:	Solid wood, veneer, PVC, PP, ABS, PMMA, HPL, Melamine, solid Melamine
Machine:	IMA Homag edge trimming machine
DESIGN:	Cutter with HSK 25 / HSK 32 holder and fastening screw. With axial angle.
TOOTH:	HW
FEED:	MEC

D mm	B mm	B1 mm	d mm	Z	n (max) min-1	Re/Li	LZ	Order No.
70	25	23	HSK 25	4	24.000	re	◇	10025866
70	25	23	HSK 25	4	24.000	li	◇	10025867

For DP edge cutters see chapter „Diamond tools“

S
AWBLADESH
LOGGERSC
UTTER WITH BORES
HANK TYPE CUTTERSD
RILLSK
NIVESC
LAMPING SYSTEM

DP - TOOLS

A
CCESSORIES